



## **How to use Bluetooth function on K1T502 with HikConnect Team mode**

<b>Title:</b>	How to use Bluetooth function on K1T502 with HikConnect Team mode	<b>Version:</b>	v1.0	<b>Date:</b>	03/07/2024
<b>Product:</b>	Access Control, Hik-Connect				

## Preparation

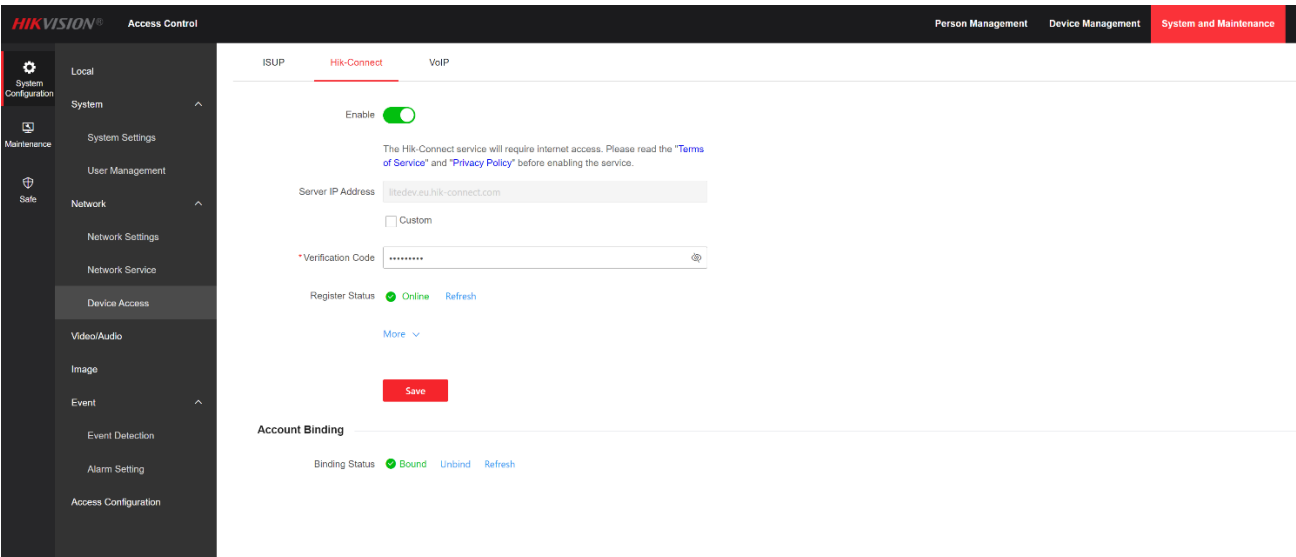
- 1. DS-K1T502 V1.9.0\_240530 or above
- 2. Hik-Connect Team mode V6.4.0 or above

## How to use Bluetooth function on K1T502 with HikConnect Team mode

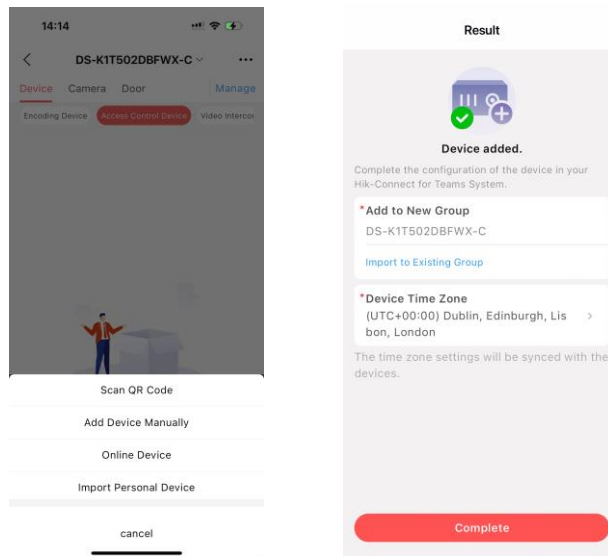
### 1. Add K1T502 to Hik-Connect

Enable Hik-Connect in the web configuration.

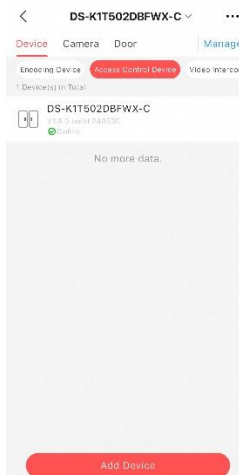
System and Maintenance – System Configuration – Network- Device Access – Hik-Connect.



Add K1T502 to the Hik-Connect, this can be done via QR Code, Manual, Local online devices, and import from personal devices.



Make sure the Device is online and has the correct time zone in the device management.



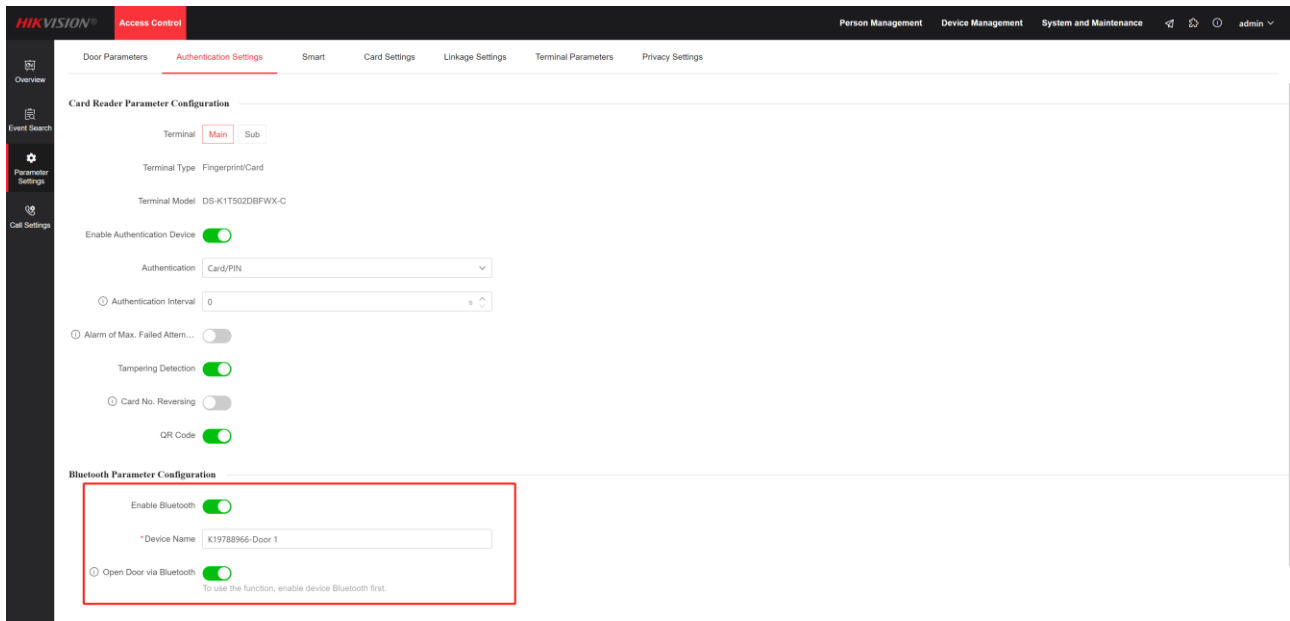
## 2. Turn on Bluetooth authentication on K1T502 web configuration.

Enter the web configuration of K1T502, find the bluetooth configuration:

Access Control – Parameter settings – Authentication Settings – Bluetooth Parameter Configurations

Turn on Enable Bluetooth and Open Door via Bluetooth. The Device name can be customized.

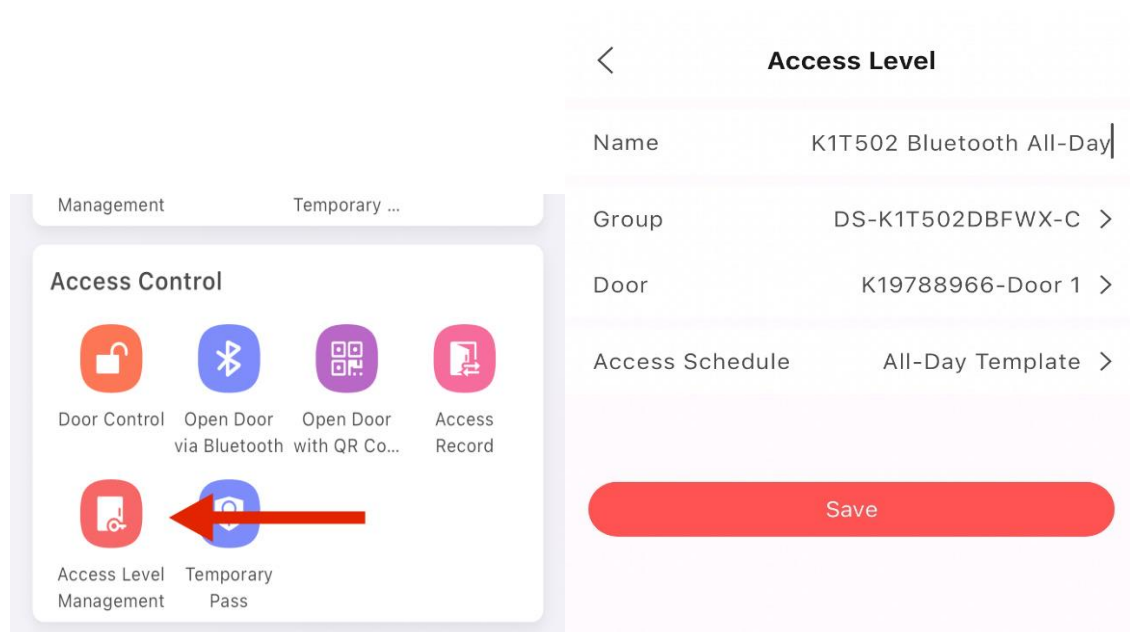
## How to use Bluetooth function on K1T502 with HikConnect Team mode



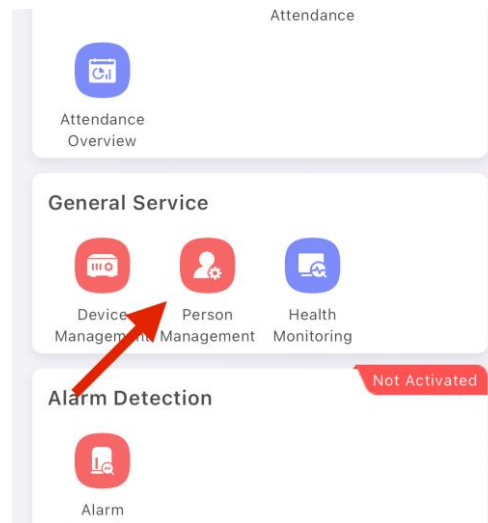
### 3. Person Management and Access Levels on Hik-Connect

Enter Access Level Management from Applications – Access Control:

Create Access Levels for K1T502, with desired Access Schedule.



Enter General Service – Person Management:



Add person, add the Email address which was used as Hik-Connect account

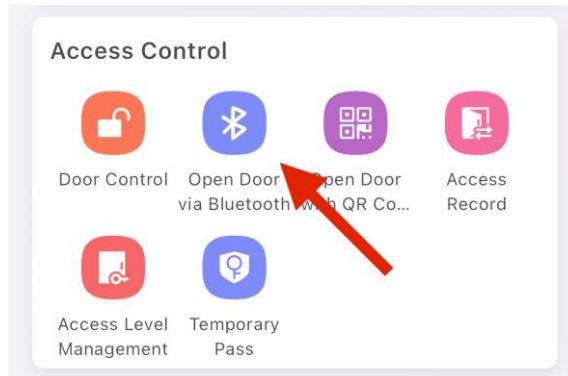
Enable Open Door via Bluetooth

Add Person		Fred	
Department	DS-K1T502DBFWX-C >	Email	[Redacted]
First Name	Fred	Phone	+ 44   Please enter.
Last Name	Please enter.	Remarks	Please enter.
Gender	Unknown >	Credential Information	
Person ID	2854119564	Face Picture	[Icon] >
Validity Period	[Edit Icon]	Card	Add Card >
Start Time	2024-07-01 00:00:00 >	Fingerprint Infor...	Add Fingerprint >
End Time	2034-07-01 00:00:00 >	Access Control	
Self-Service	<input checked="" type="checkbox"/> The self-service is for the person to use functions via Mobile Client, such as opening door via...	Open Door via Bluetooth...	<input checked="" type="checkbox"/>
Account Type	Email >	PIN Code	<input checked="" type="checkbox"/>
Email	[Redacted]	Set PIN Code	.... [Edit Icon]
		Temporary Pass	<input checked="" type="checkbox"/>
		Access Level	K1T502 Bluetooth All-Day >
Save		Save	

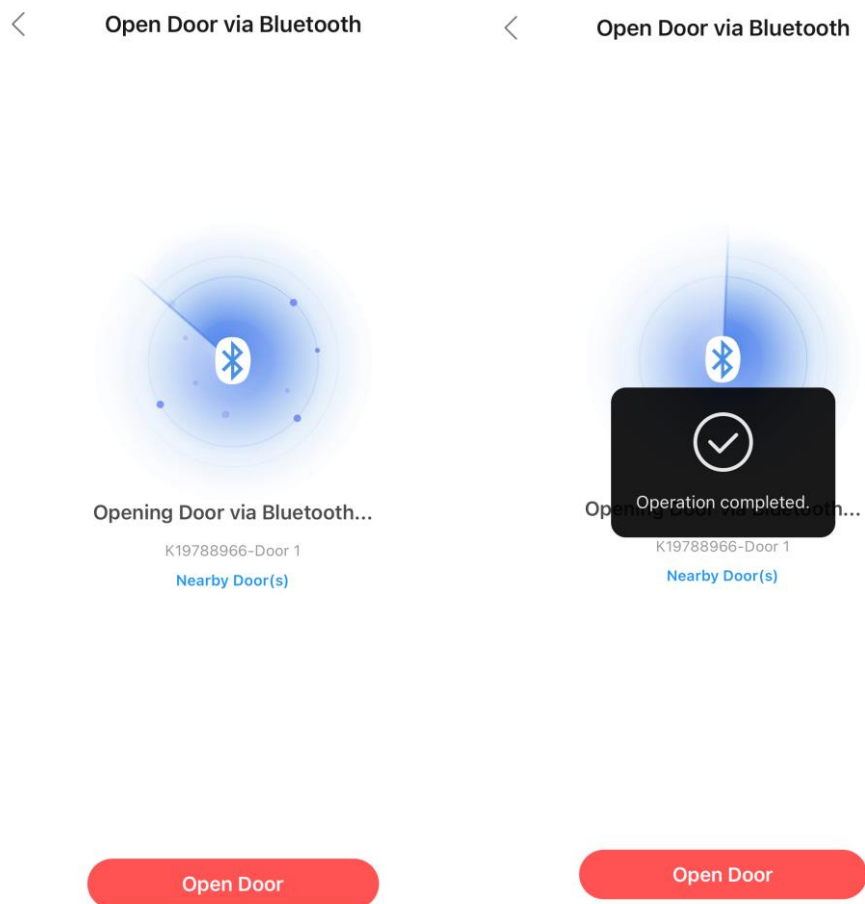
**Note:** Please re-login Hik-Connect once the new person is added.

#### 4. Bluetooth – Manual Mode

Enter Applications – Access Control – Open Door via Bluetooth.

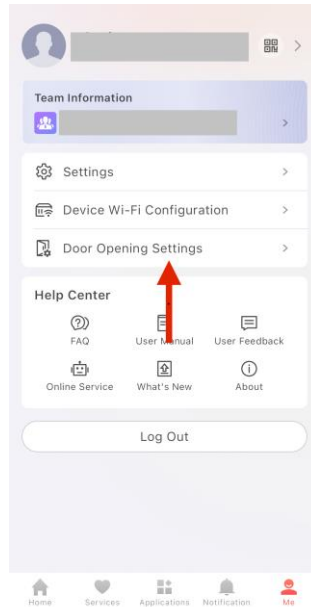


The Hik-Connect will detect the doors nearby, tap Open Door to manually unlock the door via Bluetooth.



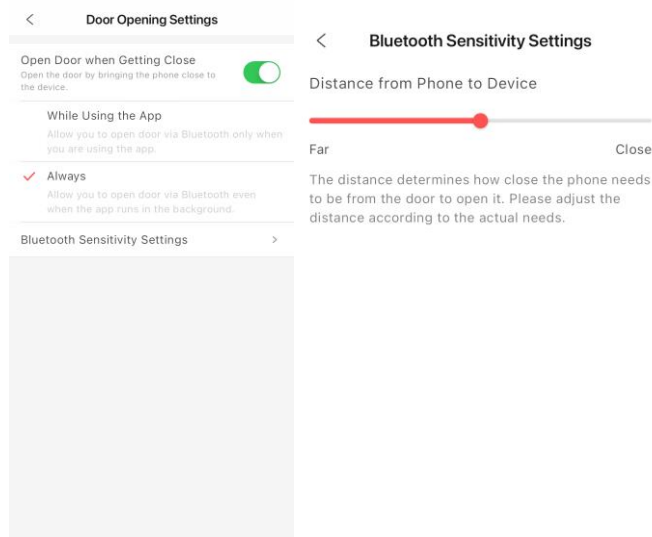
## 5. Bluetooth – Auto Mode

To Enable Bluetooth Auto mode, enter Me – Door Opening Settings:



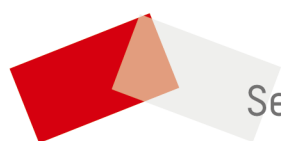
Turn on Open Door when Getting Close:

- While Using the App: The Hik-Connect App has to be turned on to unlock.
- Always: You may unlock the door while the phone screen off.



It is also possible to adjust the sensitivity in Bluetooth Sensitivity Settings.

Put the phone near the K1T502 to automatically unlock the door via Bluetooth.



See Far, Go Further